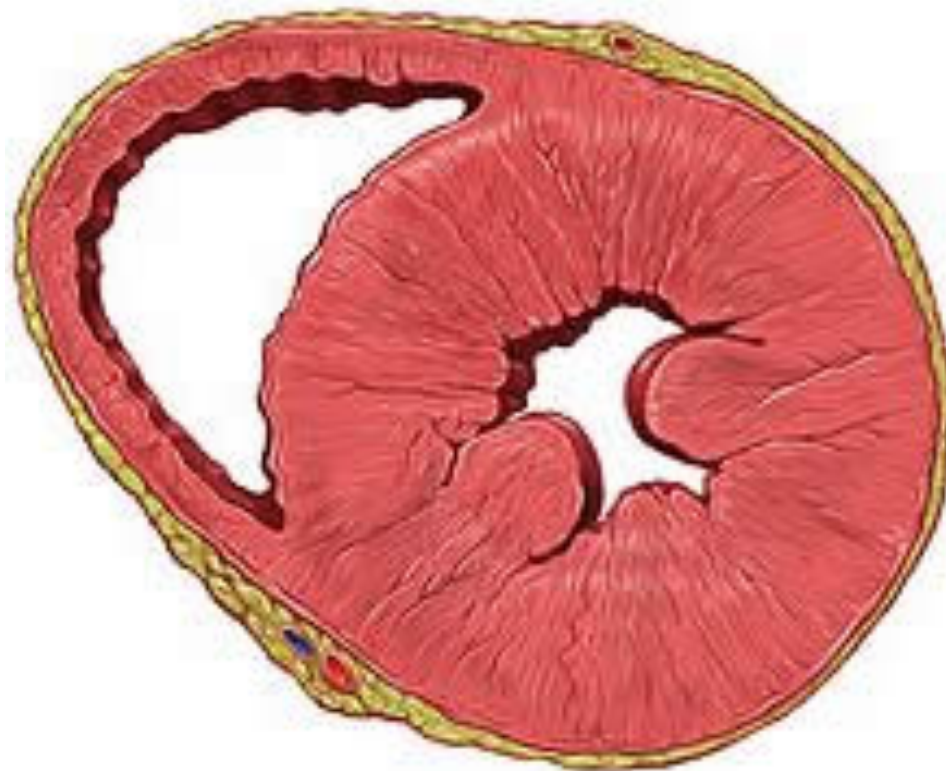
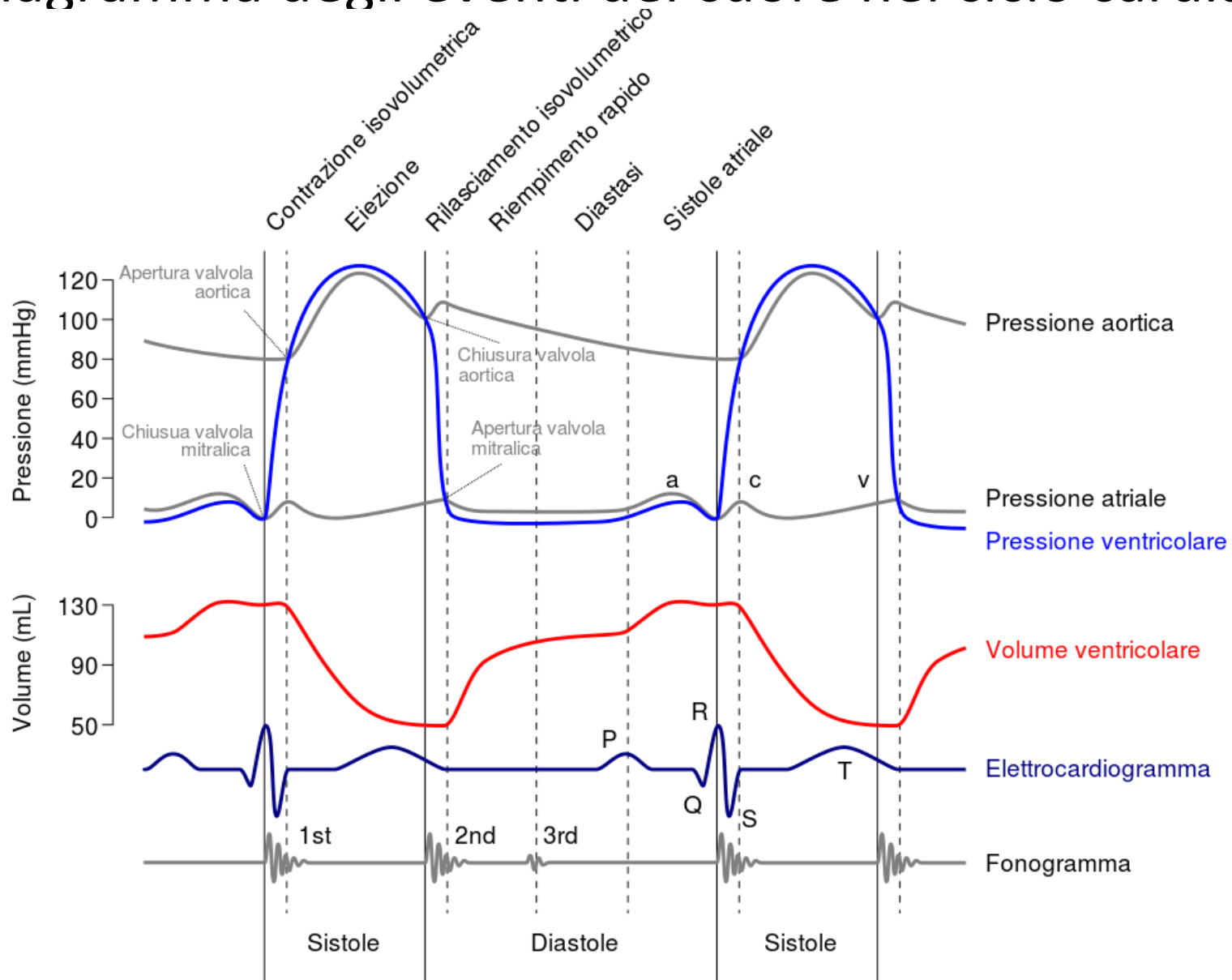


# MECCANICA CARDIACA

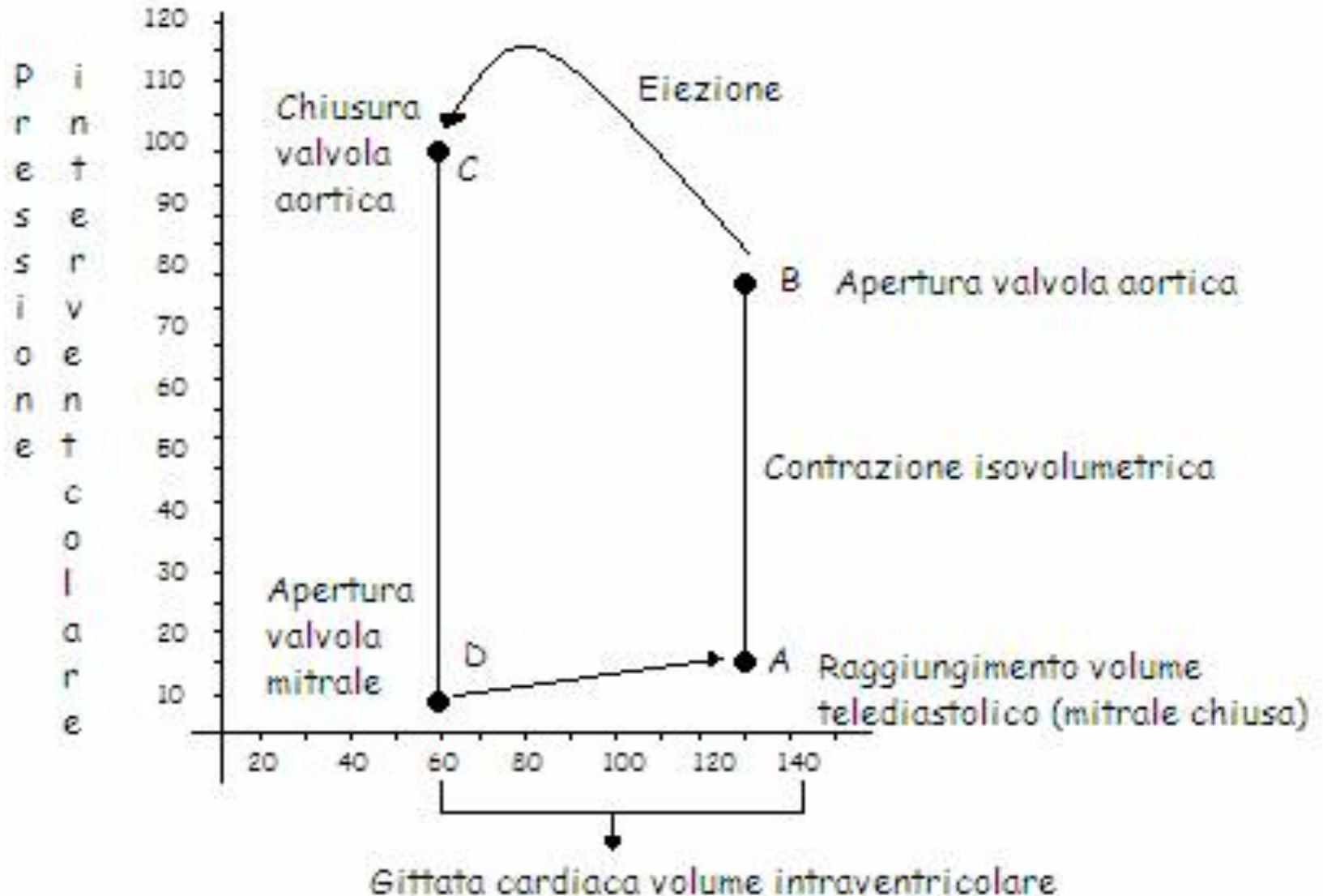
# Sezioni ventricolo dx e sx



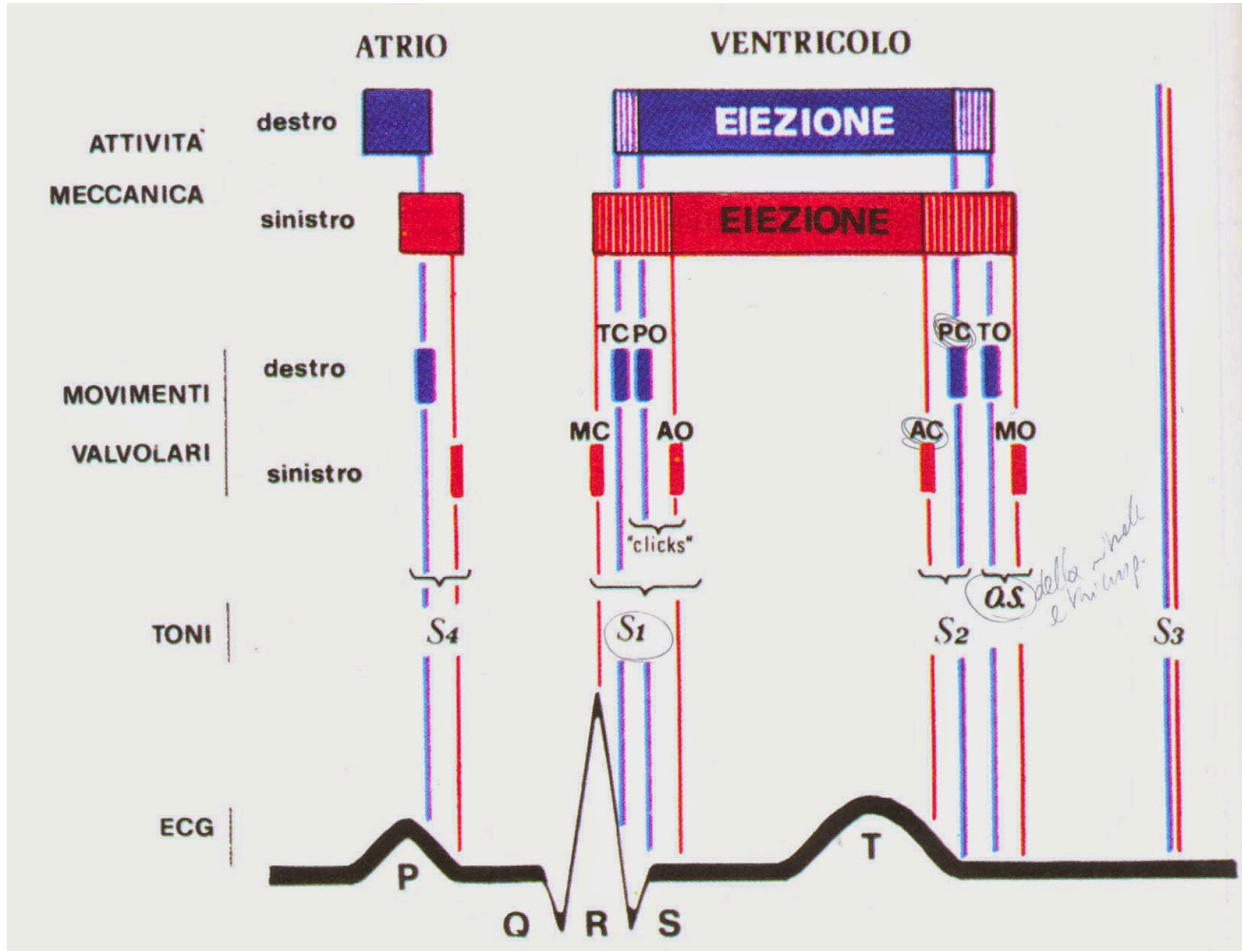
# Diagramma degli eventi del cuore nel ciclo cardiaco



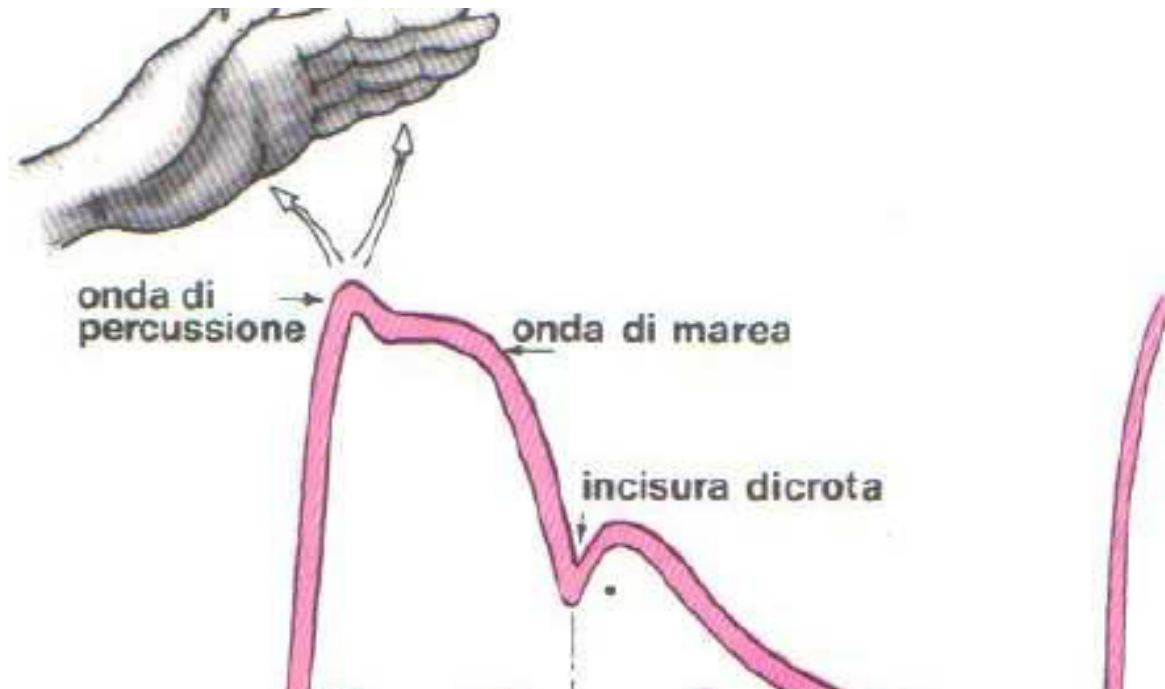
# Ciclo cardiaco nell'ambito pressione-volume



# Toni cardiaci



# Polso arterioso

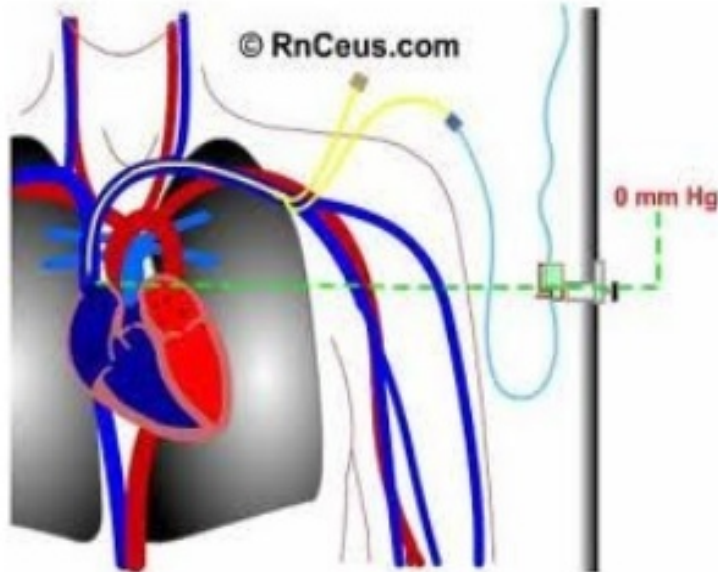


# Polso venoso (giugulare)

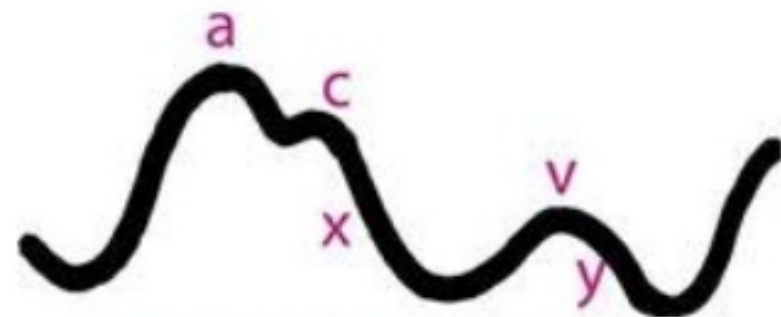


AZIENDA OSPEDALIERA  
OSPEDALE CIVILE DI LEGNANO  
Ospedali: Legnano - Cuggiono - Magenta - Abbiategrasso

Sistema Sanitario  Regione Lombardia



## Pressione venosa centrale



Central Venous Trace

# Ritorno venoso (pag.840 Rindi)

4 cause:

- **Vis a tergo** per l'azione del cuore di pompa premente (differenza di pressione arterie-vene)
- **Pompa muscolare e valvole venose**
- **Pompa respiratoria**
- **Pompa aspirante diastolica e sistolica**

Manovra di Valsava